

STATE OF FLORIDA
COUNTY OF PALM BEACH
This Plat was filed for record
at _____ M. this _____ day
of _____ 2015,
and duly recorded in Plat Book
No. _____ on page _____

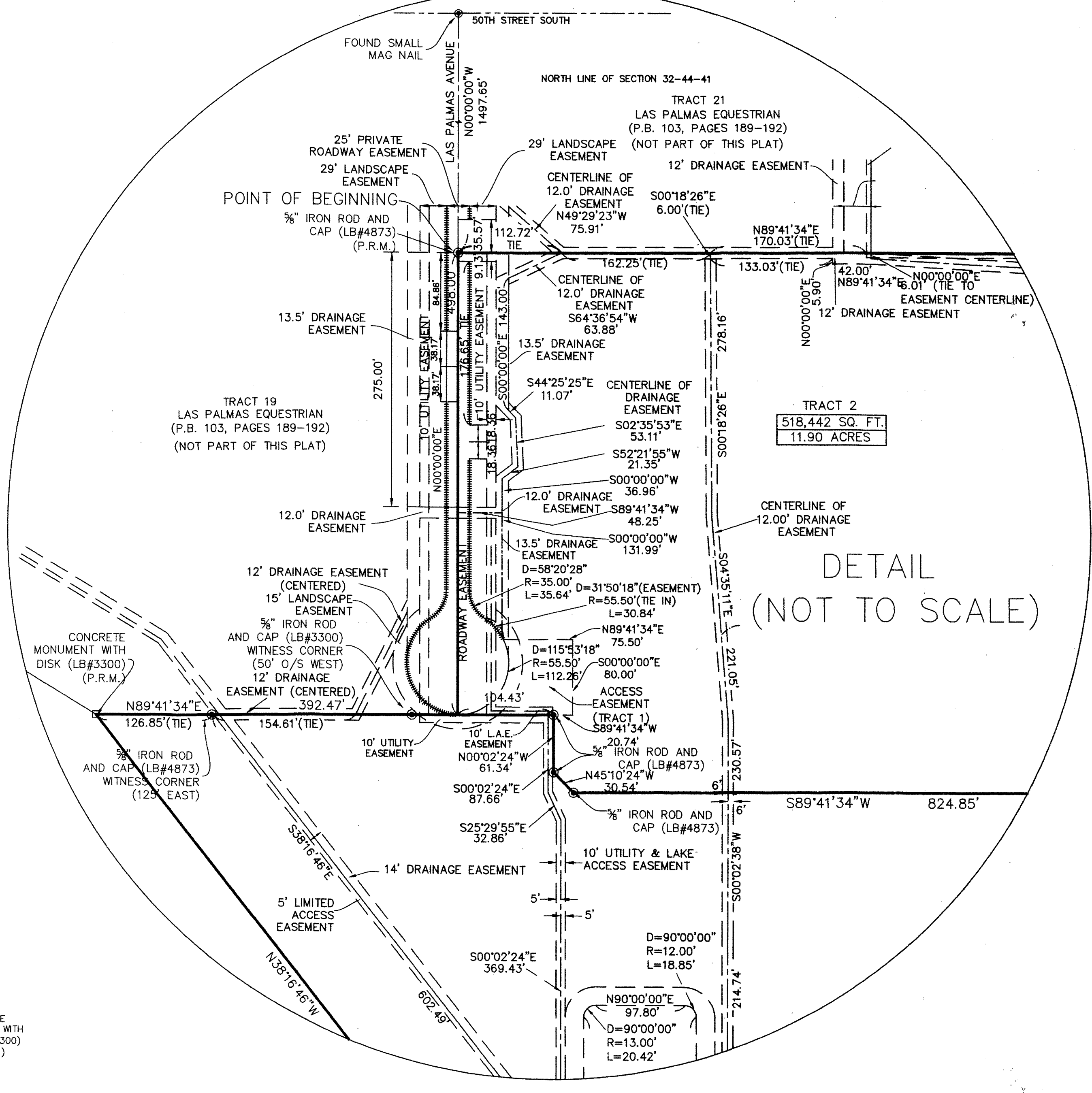
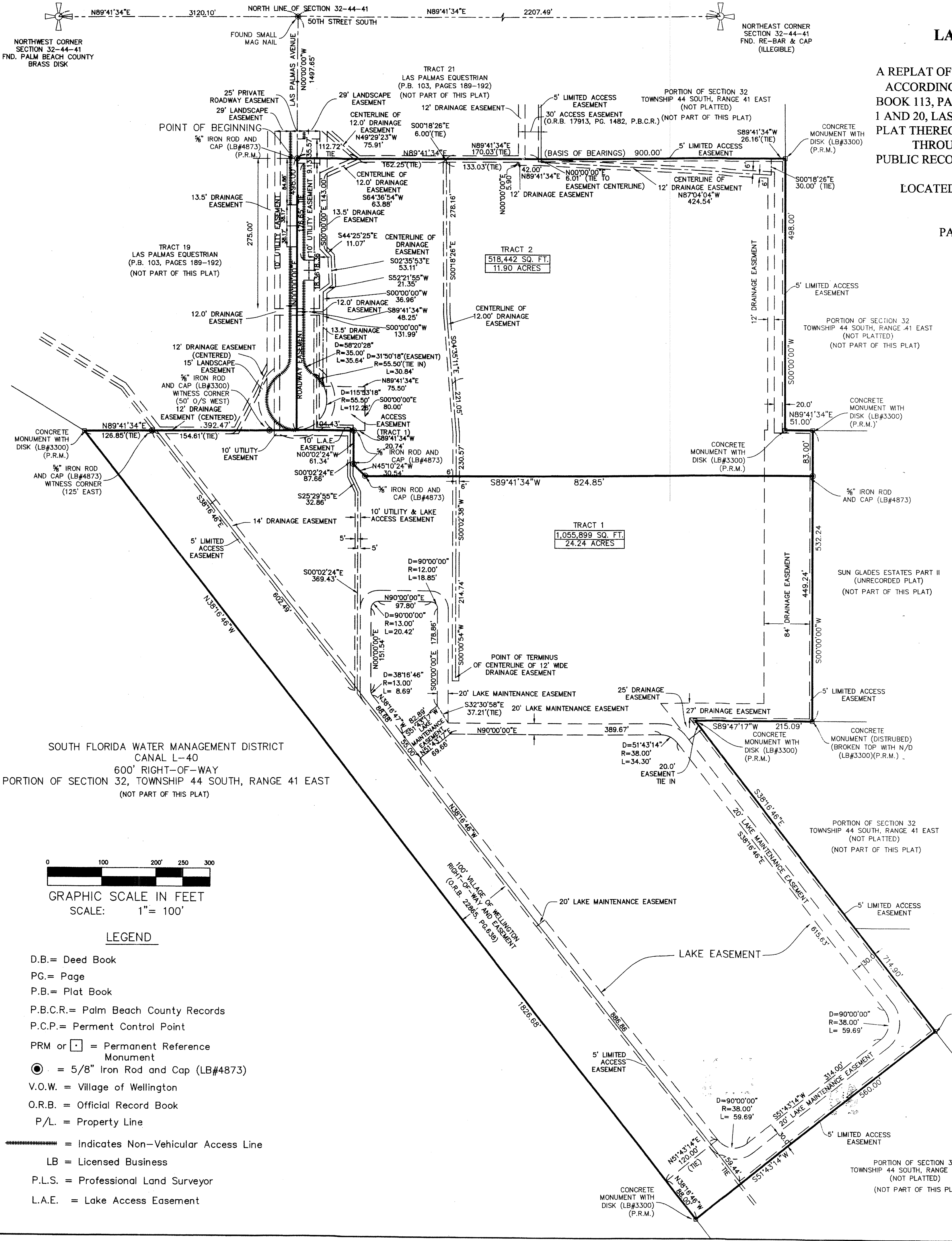
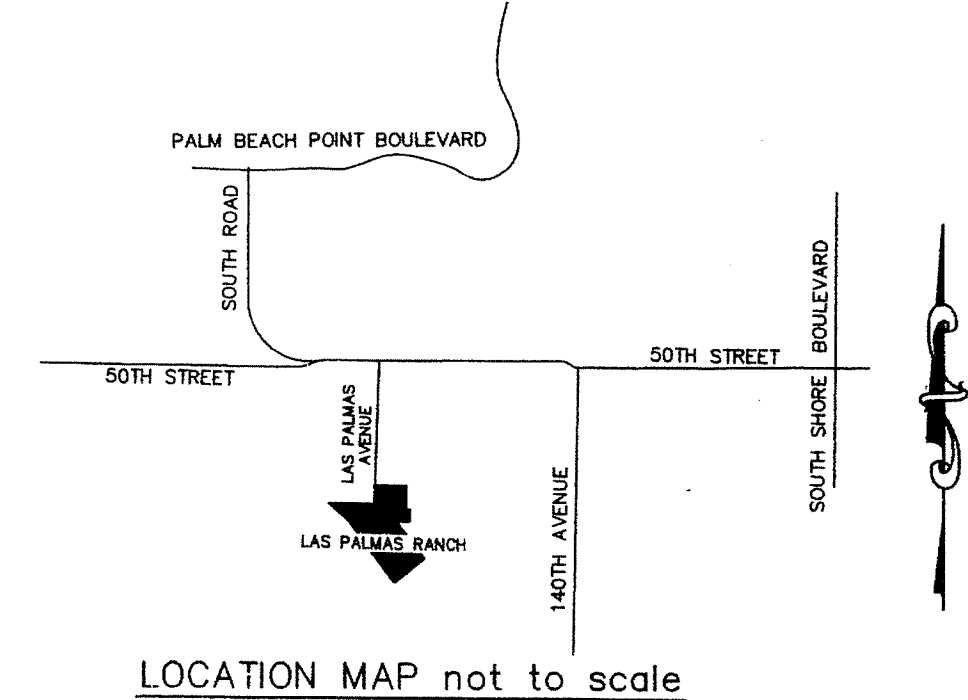
SHARON R. BOCK,
Clerk Circuit Court
& Comptroller

By _____, D.C.

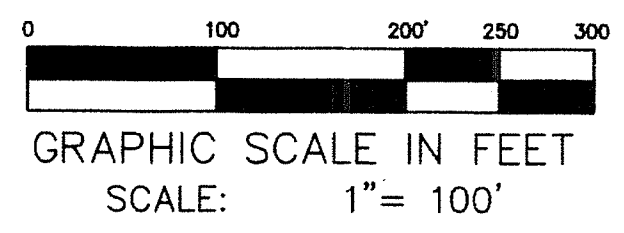
LAS PALMAS RANCH REPLAT

A REPLAT OF TRACTS 1 AND 2, LAS PALMAS RANCH
ACCORDING TO THE PLAT THEREOF, AS RECORDED IN PLAT
BOOK 113, PAGES 84 AND 85; WHICH IS A REPLAT OF TRACTS
1 AND 20, LAS PALMAS EQUESTRIAN ACCORDING TO THE
PLAT THEREOF, AS RECORDED IN PLAT BOOK 103, PAGES 189
THROUGH 192; BOTH PLATS ARE OF THE
PUBLIC RECORDS OF PALM BEACH COUNTY, FLORIDA

LOCATED IN SECTION 32, TOWNSHIP 44 SOUTH,
RANGE 41 EAST
VILLAGE OF WELLINGTON
PALM BEACH COUNTY, FLORIDA
APRIL, 2015
SHEET 2 OF 2



SOUTH FLORIDA WATER MANAGEMENT DISTRICT
CANAL L-40
600' RIGHT-OF-WAY
PORTION OF SECTION 32, TOWNSHIP 44 SOUTH, RANGE 41 EAST
(NOT PART OF THIS PLAT)



LEGEND

- D.B.= Deed Book
- PG.= Page
- P.B.= Plat Book
- P.B.C.R.= Palm Beach County Records
- P.C.P.= Perment Control Point
- PRM or \square = Permanent Reference Monument
- \odot = 5/8" Iron Rod and Cap (LB#4873)
- V.O.W. = Village of Wellington
- O.R.B. = Official Record Book
- P/L. = Property Line
- \dashv = Indicates Non-Vehicular Access Line
- LB = Licensed Business
- P.L.S. = Professional Land Surveyor
- L.A.E. = Lake Access Easement

RICHARD G. RADER, P.S.L.
FLORIDA CERTIFICATE NO.: 4861

FILE NO.
7992
(4-09-15)

JDC Development Services, Inc. LB#4873
 Fax: (561) 790-4488 (561) 790-4471
 12794 W. Forest Hill Boulevard, Suite 11A
 Wellington, Florida, 33414